



INFORMATION BOOKLET

Katherine School of the Air
2026



Confident. Resilient. Independent



SCHOOL CONTACT

SCHOOL DETAILS



89 651 555



kath.soa@education.nt.gov.au



101 Giles Street, KATHERINE NT 0850



PO Box 531, KATHERINE NT 0851

SOCIAL MEDIA



www.ksa.nt.edu.au



[katherineschooloftheair](https://www.facebook.com/katherineschooloftheair)



[@katherine.schooloftheair](https://www.instagram.com/katherine.schooloftheair)



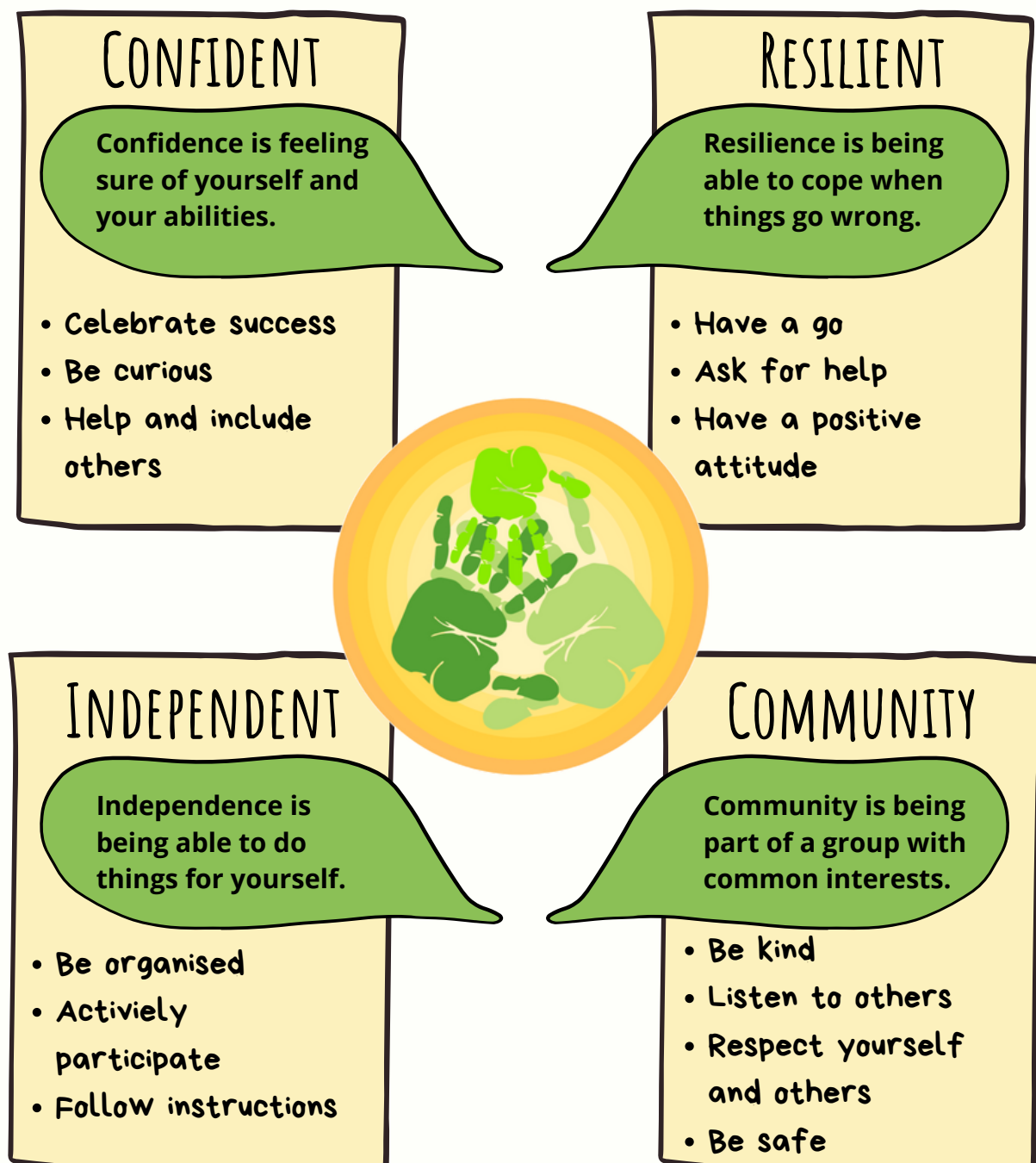


TABLE OF CONTENTS

School Values	4
Welcome	5
Demographics	6
History	8
General Information	9
Enrolment	10
Attendance	12
Home Tutors	13
Contact Events	14
School Calendar	15
Visiting	16
Curriculum	17
Teaching	19
Reporting	23
Community	24
Communication	27
Technology	28
Facilities	32
Financial	33

- THE KSA WAY -

We are a community that works hard, has fun and learns together so students can be...





WELCOME

Katherine School of the Air (KSA) is one of three distance education institutions in the Northern Territory and is a public Department of Education and Training (DET) Northern Territory school.

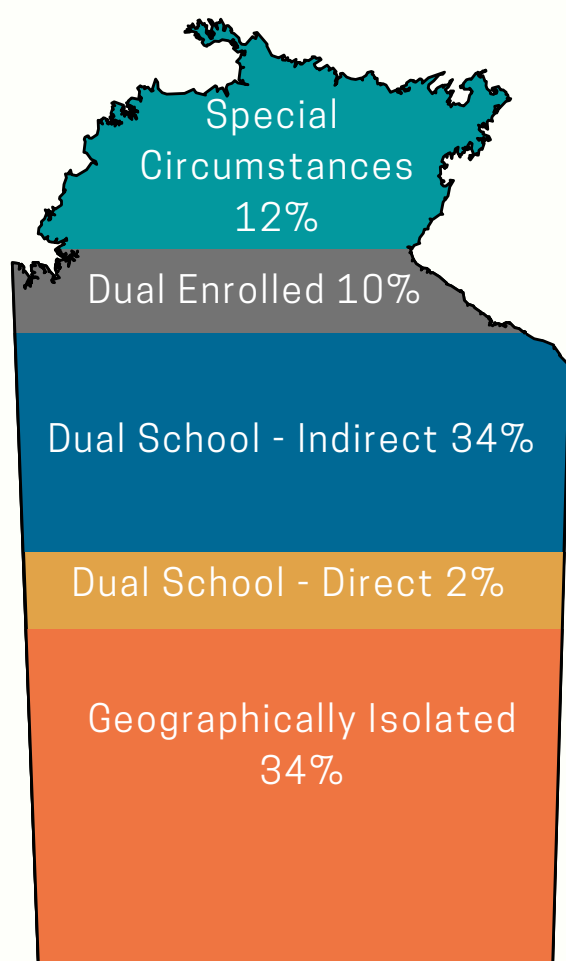
KSA delivers an innovative and engaging educational experience that empowers students from KSA Cubs (aged 3) to Year 9 to achieve their maximum potential. The school offers educational services and learning programs to students in the top end of the Northern Territory, including the islands off the NT coast, areas in Western Australia near the NT border, as well as NT residents who are temporarily travelling or working interstate and overseas.

KSA accommodates a wide variety of family situations, such as geographical isolation, travel, flexible learning arrangements, and students with medical conditions.

The school offers high-quality virtual learning tailored to the distinct learning environment of the Northern Territory while also providing traditional school experiences for its students at contact events and KSA connect.

DEMOGRAPHICS

Between 280 - 310 Students



Travelling
Australia

Travelling
Overseas



Parent
Employment



Indigenous
40%



LBOTE
42%



EALD
35%



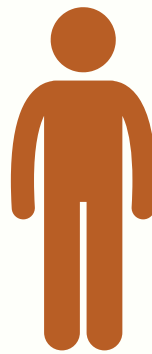
Disability
55%



STAFF



Principal



21 Teachers



6 Tutors



5 Admin &
Grounds Staff



5 Digital &
Data Staff



HISTORY

Katherine School of the Air has changed significantly over the years from being a correspondence school via two way radio to a virtual school providing students with the ability to instantly connect and collaborate with their peers and teachers.

1966

KSA Commences

The school was the first distance education school in Australia to operate separately from the Royal Flying Doctors Service's radio network. KSA opened on 14th June with the first radio lesson commencing 12th September.

2005

Interactive Distance Learning - IDL

Two way radio lessons faded out gradually over the years as the school transitioned to internet based learning. The radio studio was upgraded to an IDL studio.

2020 to current

Teaching from anywhere

The main studio was converted to a teaching space as reliable internet and video conferencing software upgrades enabled the ability to teach from anywhere in the school. Teaching areas were converted to pods to support virtual learning from the teacher's desk.

GENERAL



Opening Hours

The front office is open from 7:30am to 4:00pm Monday to Friday during school terms.

Teachers are available during the school term, within school hours 8:00am to 3:00pm.

The Administration and the Digital & Data teams are available all year. During the school holidays we recommended families contact the school 89 651 555 for opening hours.

Closed

KSA is closed for all NT observed and National public holidays including the Katherine Show regional holiday.

The school is closed for two weeks over the Christmas and New Year period.

Contact


All KSA staff have their own dedicated phone number and email address. A staff directory can be found on the KSA Community Team and is also included in families first work packs.

ENROLMENT



Enquiry

KSA has a dedicated enrolment team to support families through the enrolment process. The team will discuss the families circumstances, eligibility and supporting documents that are required to enrol. Although KSA is a public school, students are only able to enrol under specific categories and must meet eligibility requirements.

Contact the enrolment team via reception 89 651 555 or email the team directly.  ksa.administrator@education.nt.gov.au

Enrolment Process

1. **Enquiry:** The family submits the student's details, location, and reason for enrolment.
2. **Pre-Enrolment Package:** The enrolment team contacts the family to discuss the enrolment category and required documentation.
3. **Pre-Enrolment Interview:** A link is sent for an interview with the principal, who reviews the enrolment and discusses expectations, then approves or disproves the enrolment,
4. **Enrolment Package:** The family completes the enrolment package.
5. **Induction:** The Family Support Coordinator (FSC) contacts the family to conduct the induction process, including:
 - Student assessment
 - Classroom setup
 - Home tutor support
 - Arranging work packs
 - Teacher handover support
6. **Commencement:** The student begins learning with the teacher.

ENROLMENT



Family Support Coordinator

The school has a Family Support Coordinator (FSC) to assist families with the enrolment process and the initial transition to distance education with KSA. The FSC offers support in the following areas:

- Enrolment assistance
- Facilitating connections between families, teachers and specialty staff
- Classroom setup
- Home tutor support
- Enhancing student engagement

Additionally, the FSC organises a Home Tutor Conference during contact events, featuring specialist presenters to support parents, caregivers, and home tutors.

Family Support Coordinator



89 651 585



megan.prime@education.nt.gov.au

ENROLMENT



Digital and Data Support

The schools dedicated Digital and Data (DaD) Team assists families and the school community with digital, hardware and data. The DaD team provide support in the following areas:

Digital Support

- Setting up KSA provided laptops
- Supporting families own devices
- Access to school systems
- IT troubleshooting
- Training session

Data Support

- Attendance
- Enrolments
- Disenrollments
- Change of circumstances

The team is available Monday to Friday 7:30am to 4pm during school terms and are available each school holidays (contact for holiday hours)

The DaD team has a direct line and email

Tech Support



89651 570



ksa.techsupport@education.nt.gov.au

Attendance and Enrolment Support



89651 570



ksa.administrator@education.nt.gov.au

ATTENDANCE



Attendance and Engagement

To help students reach their full potential, the school expects full engagement with the learning program. KSA tracks daily attendance and engagement through:

- Participation in online lessons
- Communication with teachers via phone/email/teams
- Timely submission of weekly assignments and work returns

Parents must notify the school of any absences promptly, as the school follows up on unreported absences daily. KSA also reports attendance data to Centrelink and other agencies each term for families receiving payments, such as AIC and internet subsidies.

Attendance Strategy

Families receive twice termly attendance reports to keep them updated on their child's attendance and engagement levels.

KSA has implemented an attendance strategy policy designed to identify and assist students and families who are "at risk" of experiencing poor attendance or engagement. KSA prioritises helping students attend school every day and offers a range of adjustments and supports to help them achieve their full potential.

HOME TUTOR



Home Tutor Role and Responsibility

Parents/carers must provide adult supervision (home tutor) during the the school day. The home tutor's (HT) primary role is to support in the delivery of the learning program to students.

The home tutor and KSA teacher are a teaching team who work together to support the student. A partnership between the home tutor and teacher is imperative for successful education at KSA.

Home Tutor Support

Regular support sessions and conferences for home tutors are conducted throughout the school year to assist them in their essential role. Home tutor conferences take place during contact events, featuring various special guests as presenters.

Additionally, a Microsoft Teams group is available for home tutors to ask questions and share ideas. The Family Support Coordinator is also available year-round to provide individualised support and training for new home tutors and parents.



CONTACT EVENTS

Contact Events

KSA hosts Inschool contact events during Week 10 of each term throughout the school year. These events take place at KSA and other venues around Katherine. Inschools provide a valuable opportunity for students to connect in person with their teachers and classmates. It also enables students to participate in engaging learning activities, and enjoy a range of experiences including STEM, sports, swimming and excursions.

Parents and home tutors are also encouraged to participate in Inschool events. A variety of learning opportunities are available, including Parent and Home Tutor Conferences, School Council meetings and community events.

Parents are responsible for arranging accommodation for Inschool events. As accommodation in Katherine can book out quickly, we recommend making arrangements as early as possible.

While attendance at Inschools is encouraged, it is not mandatory. For students who are unable to attend in person, KSA provides engaging online lessons that align with the theme of each event. Similarly, Parent and Home Tutor sessions are also offered online to ensure everyone has access to the conferences and meetings, regardless of location.

Please refer to the following two pages for more detailed information about Inschool events and the 2026 School Calendar.



CONTACT EVENTS

Contact Events

Each Inschool features a unique theme designed to engage students in a wide range of learning experiences. To support planning and participation, a comprehensive Inschool booklet is released every term around week 5 or 6. These booklets includes detailed information about activities, along with registration and excursion forms.

The usual sequence of events has been adjusted in 2026 to accommodate public holidays and the KSA 60th Anniversary celebrations.

Term 1 – Science Week

- Monday to Thursday
- Thursday: Science Fair
- Friday: Public Holiday (no events)

Term 2 – Science Week

- Monday to Thursday
- Monday: Sports Carnival
- Thursday: Cross Country
- Friday: No events (due to 60th celebrations)

Term 3 – Swim Week

- Monday to Friday
- Monday to Thursday: Swimming Lessons
- Friday: Swimming Carnival

Term 4 – Celebration Week

- Monday to Thursday
- Wednesday: Graduations
- Thursday: Concert & Award Ceremony
- Friday: Pupil-Free Day across NTG schools



2026

January

	MO	TU	WE	TH	FR	SA	SU
	29	30	31	1	2	3	4
	5	6	7	8	9	10	11
	12	13	14	15	16	17	18
	19	20	21	22	23	24	25
1	26	27	28	29	30	31	1

February

	MO	TU	WE	TH	FR	SA	SU
1	26	27	28	29	30	31	1
2	2	3	4	5	6	7	8
3	9	10	11	12	13	14	15
4	16	17	18	19	20	21	22
5	23	24	25	26	27	28	1

March

	MO	TU	WE	TH	FR	SA	SU
5	23	24	25	26	27	28	1
6	2	3	4	5	6	7	8
7	9	10	11	12	13	14	15
8	16	17	18	19	20	21	22
9	23	24	25	26	27	28	29
	30	31	1	2	3	4	5

Week 6 - Years 7 to 9 Darwin Pop up

Week 7 - NAPLAN Online Years 3, 5, 7 & 9

April

	MO	TU	WE	TH	FR	SA	SU
10	30	31	1	2	3	4	5
	6	7	8	9	10	11	12
1	13	14	15	16	17	18	19
2	20	21	22	23	24	25	26
3	27	28	29	30	1	2	3

Inschool - Science Week

May

	MO	TU	WE	TH	FR	SA	SU
3	27	28	29	30	1	2	3
4	4	5	6	7	8	9	10
5	11	12	13	14	15	16	17
6	18	19	20	21	22	23	24
7	25	26	27	28	29	30	31

June

	MO	TU	WE	TH	FR	SA	SU
7	25	26	27	28	29	30	31
8	1	2	3	4	5	6	7
9	8	9	10	11	12	13	14
10	15	16	17	18	19	20	21
	22	23	24	25	26	27	28
	29	30	1	2	3	4	5

Inschool - Sports Week

July

	MO	TU	WE	TH	FR	SA	SU
	29	30	1	2	3	4	5
	6	7	8	9	10	11	12
1	13	14	15	16	17	18	19
2	20	21	22	23	24	25	26
3	27	28	29	30	31	1	2

August

	MO	TU	WE	TH	FR	SA	SU
3	27	28	29	30	31	1	2
4	3	4	5	6	7	8	9
5	10	11	12	13	14	15	16
6	17	18	19	20	21	22	23
7	24	25	26	27	28	29	30
8	31	1	2	3	4	5	6

September

	MO	TU	WE	TH	FR	SA	SU
8	31	1	2	3	4	5	6
9	7	8	9	10	11	12	13
10	14	15	16	17	18	19	20
	21	22	23	24	25	26	27
	28	29	30	1	2	3	4

Inschool - Swim Week

October

	MO	TU	WE	TH	FR	SA	SU
	28	29	30	1	2	3	4
1	5	6	7	8	9	10	11
2	12	13	14	15	16	17	18
3	19	20	21	22	23	24	25
4	26	27	28	29	30	31	1

November

	MO	TU	WE	TH	FR	SA	SU
4	26	27	28	29	30	31	1
5	2	3	4	5	6	7	8
6	9	10	11	12	13	14	15
7	16	17	18	19	20	21	22
8	23	24	25	26	27	28	29
9	30	1	2	3	4	5	6

NTLC - Student Leaders

December

	MO	TU	WE	TH	FR	SA	SU
9	30	1	2	3	4	5	6
10	7	8	9	10	11	12	13
	14	15	16	17	18	19	20
	21	22	23	24	25	26	27
	28	29	30	31	1	2	3

Inschool - Celebration Week

Public Holiday

Students Commence

Professional Development

School Event

VISITING



Visiting KSA

When in Katherine, families are encouraged to drop in to the school. With prior warning, parents can book times to meet with teachers. Students are also able to join in on their lessons.

Teachers can work with students, provide feedback on work returns and discuss student progress. It is also an opportunity to talk with the home tutor and provide further assistance if needed.

It would be appreciated if families contact their teachers to plan their visit 2-3 days ahead where possible.

Patrols - Home Visits

At KSA, Patrols (home visits) are considered a vital part of the educational service we provide. These visits offer a meaningful opportunity for staff to build strong relationships with families and deliver on-site support tailored to each student's learning journey. Whenever possible, families host KSA staff in their homes during these visits.

The timing and focus of each visit are negotiated directly with families to ensure they meet individual needs and circumstances. Our teaching staff aim to visit families located within the NT once every two years. However, this schedule may vary depending on school priorities, staffing capacity and student needs.



CURRICULUM

KSA Curriculum

KSA has developed course material in line with version 9 of the Australian Curriculum.

Preschool students engage in a play based program to learn about themselves within the context of their families and communities.

Primary students engage in separate subjects for English, Mathematics, The Arts, Health and Physical Education. Other subjects are combined in an integrated inquiry project designed to immerse students in deep learning across key learning areas.

Middle Years students engage in a range of Australian Curriculum subjects with a particular focus on preparing them for their future.

All KSA students engage in a Social Emotional Learning program. The SEL program supports student personal and social development.

Learning Material

Student learning materials are available online and as paper based materials. The material is designed to guide the home tutor and student through the content required for successful learning. A terms worth of learning material is sent out at the end of each term in a work pack ready for the new term.



CURRICULUM

School Day

Our school day is structured to meet the Australian Curriculum and NT guidelines, ensuring every student has the time and support to succeed. While distance education offers flexibility in the home classroom, education is not optional. Families play a vital role in creating a structured school day that allows students to attend scheduled online lessons and actively participate throughout the day. Time should also be set aside for continued learning in the home environment, including completing set tasks and assessments in printed course materials.

We recommend families set up a weekly timetable that clearly shows online lesson times and blocks time to complete work. Some students may have an adjusted subject load to meet their enrolment needs, so timetables should reflect these requirements.

Preschool: Children enjoy a play-based program for 3 hours per day, 3 days a week.

Students in Transition to Year 9 have a minimum learning time of 5 hours and 20 minutes per day not including recess, lunch and other breaks.

Transition to Year 6: Students engage in a balanced program of literacy, numeracy, project (HASS, Science, technologies), The Arts, HPE and SEL.

Years 7–9: Middle years students experience a broader curriculum, including core subjects and other learning areas preparing them for future pathways.



CURRICULUM

Electives

KSA has developed a variety of electives for students in to access in Terms 2 and 3. The electives program is designed to broaden student learning within and beyond the curriculum. The program has been developed in response to student's feedback about wanting opportunities to engage in extra-curricular activities that are fun.

The electives program enables students to:

- make choices about their learning
- explore a diverse range of experiences and approaches
- engage with tasks that interest them
- develop a positive attitude to learning
- communicate and work collaboratively with their teachers/peers

KSA Cubs Program

Geographically isolated children aged three can participate in the KSA Cubs Program. KSA Cubs is designed to help young children and their families connect with other early years families throughout the NT while fostering foundational early learning skills. Participants engage in play-based online lessons twice a week and have the opportunity to take part in special KSA Cubs events during Inschools.



CURRICULUM

KSA Curriculum - Overview

Preschool Curriculum



Primary Years Curriculum (Transition – Year 6)



Middle Years Curriculum (Years 7 – 9)





TEACHING

Online Lessons

KSA teachers deliver daily online lessons to enrich the student's learning experience. Using video conferencing software, teachers and students can interact and engage in learning activities as a group.

Students are provided with opportunities to engage with each other to discuss and share their thinking. Online lessons are considered compulsory for students unless travelling or by discussion with the principal.

Online Resources

KSA provides a safe and interactive online environment for students to engage in their learning. This provides access to learning materials, video clips and other media to enhance the student's learning experience.

Students upload work returns online for their teacher to mark and provide informative feedback.

Individual / Small Group Sessions

Teachers and KSA Tutors provide individual/small group lessons. These lessons are targeted teaching/assessing time which may include a specific instructional focus, follow-up of the student's work returns or additional support related to the student's individual learning plan.



TEACHING

Monitoring and Assessing

Student learning is monitored on a daily basis through work returns, interactions with teachers and feedback from home tutors. Assessment tasks are embedded in the student learning materials and aligned to the Australian Curriculum. Students participate in a range of diagnostic assessments for reading, spelling and maths which are administered by the teacher or the home tutor.

Teachers gather evidence of student learning and provide feedback and recommendations for future learning to the student, home tutor, and parent.

Work Returns

Students are provided with a due date calendar or assessment schedule for the term which outlines the learning material that is required to be returned for marking and assessing.

Students return completed work a minimum of once per week and upload completed learning material to their class team in Microsoft Teams.



TEACHING

Learning Support and EAP's

KSA is committed to ensuring that each student reaches their fullest potential both academically, socially, and emotionally. While the majority of students can thrive accessing whole school or class programs, those with additional needs such as English as a Second Language, learning challenges, or disabilities, will have their teaching and learning programs adjusted to support their access to the curriculum.

Additionally, our Inclusion and Wellbeing team provides support for students with an Education Adjustment Plan (EAP), facilitating the necessary learning adjustments for their success. The team also provides customised curriculum to students requiring significant support and adaptation to enable the students to access quality learning at their level.

The Senior Teacher of the Inclusion and Wellbeing team is available throughout the school term to discuss any learning concerns, strategies, supports, referral pathways, and EAPs with families. Parents are encouraged to contact the front office to schedule an appointment with the team.



TEACHING

Read Write Inc and Fresh Start

Online students in transition to year 2 engage in the Read Write Inc program. The phonics programs supports students to develop reading fluency and comprehension to enable spelling and writing with confidence.

All students undertake a phonics screen on commencement at KSA. Where older students are identified as requiring phonics supports they engage in the Fresh Start program to ensure key comprehension is cemented in their learning.

Spelling Mastery & Spelling Through Morphographs

Online students in years 3 to 9 engage in the Spelling Mastery program. as part of their core learning. The program supports students to develop dependable spelling skills through explicit, structured lessons that combine phonemic, morphemic, and whole-word approaches, ensuring mastery and retention of spelling rules.

Students in Years 7 to 9 who are identified as requiring spelling support engage in the Spelling through Morphographs program.

Maths Tutoring

All students at KSA undergo a mathematical screening upon their commencement. Identified students who need assistance with mathematical knowledge attend specialised tutoring sessions held in small groups.



TEACHING

Transitioning and Pathways

At KSA, students receive various forms of support during transitions throughout their education journey. "School transitions" encompass the movement between different educational settings, such as early childhood, primary, middle, high school, and post-school environments.

The school supports students to access various pathways during their middle years education to support the transition to the senior secondary or post-school environment.

NAPLAN

The National Assessment Program – Literacy and Numeracy (NAPLAN) is an annual assessment for students in Years 3, 5, 7 and 9. All students are required to undertake NAPLAN testing.

NAPLAN is made up of tests in the 4 areas (or 'domains') of:

- reading
- writing
- conventions of language (spelling, grammar and punctuation)
- numeracy.

The results can assist teachers by providing additional information to support their professional judgement about students' levels of literacy and numeracy attainment and progress.

KSA conducts NAPLAN assessments online via Single Stream Testing.

In 2026 testing will occur, Wednesday 11th to Friday 13th March.



REPORTS

Semester Reports

The purpose of reporting is to communicate information about student achievement and progress to parents/carers. At KSA written reports of achievement are provided to parents twice a year, at the end of Semester 1 and Semester 2.

For students in Years 1 to 9, written reports consist of an A-E grade, effort grade and comment for each learning area/subject taught and assessed that semester. No A-E grade is given for Transition students.

The Australian Curriculum achievement standards indicate the skills, knowledge and understandings that students should typically demonstrate by a particular point in their schooling and are used as a common reference point for reporting to parents.

Interim Reports

Interim reports are provided to students in years 7 to 9 at the end of Term 1 and Term 3. The interim report provides parents and home tutors with a snapshot of a student's progress and engagement in their learning.



COMMUNITY

The KSA Way

Students are encouraged and awarded tokens for displaying The KSA Way values. The tokens can be redeemed through the weekly KSA Way shop for goodies and prizes. Teachers award student tokens via Live School during lessons and individual catchups.

The shop is open three times during the term, announced and hosted through the KSA Community Teams page.

Students encourage and support each other to display the values upheld within the KSA Way, both in and out of the classroom.

At the end of each year, awards are presented at the end of year concert for the students with who have showcased the KSA way values and received the most tokens.

Assembly

KSA hosts online assemblies each Friday afternoon from Week 1 to Week 9 of each term. All KSA students are encouraged to attend assemblies even if they are enrolled as paper based students.

Assemblies are hosted by a different class each week and often have a theme. During the assembly the school presents principal and class awards and showcases student achievements.



COMMUNITY

Awards and Scholarships

Throughout the year students are provided with opportunities to receive awards and scholarships.

- Weekly Class Awards
- Sports, Cross Country and Swimming Champion Awards
- Sportsmanship Awards
- ICPA Art Awards
- Salli Thomas Year Scholarships - Years 6 and 9
- Class Award for the year
- Department of Education and Training Excellence Awards - Literacy and Numeracy
- KSA Art Awards
- KSA Way Awards
- Australian Day Student Citizenship Awards - Years 6 and 9
- NT Board of Studies Academic Excellent Awards - Years 6 and 9
- Katherine Town Council Perpetual Leadership Award - Primary and Middle Years

School Council

The KSA School Council is made up of a chairperson, secretary, four parent representatives, the principal and two teacher representatives. The council is essential in providing feedback and guidance for school improvement. The council meets regularly to discuss school operations and holds meetings at contact events. All parents and home tutors are welcome to attend.



COMMUNITY

Katherine Isolated Children's Service - KICS

Katherine Isolated Children's Service is a not-for-profit, registered charity and an incorporated association. KICS visits children and families who are socially and geographically isolated. KICS visits children living on pastoral properties, in Indigenous communities, and participates in invitational events such as Katherine School of the Air events.

ICPA

The Isolated Children's Parents Association (ICPA) strives to ensure all isolated children have equality in access to quality education and opportunities. Parents are strongly encouraged to become members of the ICPA.

The small membership fee gives families access to numerous bursaries and grants, the Home Tutor Register, up-to-date information and subscriptions to the ICPA magazines Down the Track (NT) and PEDALS (federal). For further information or to join the ICPA. www.icpa.com.au

Dolly's Dream

Dolly's Dream has teamed up with KSA to promote the health and wellbeing of students, offering sessions throughout the term for both students and parents.

Additionally, Dolly's Dream has appointed a dedicated representative to focus specifically on distance education students and those transitioning to boarding school.



COMMUNICATION

Student Emails

All students are provided with a NT Schools email account when first enrolled in a government school. KSA sends all communication to student email accounts including online lesson links, weekly updates from teachers, the newsletter and school announcements.

Community Teams

The KSA Community Team is available to all families via student logins and can be viewed on mobile devices. The team has daily resources and information for parents and much more.

The Dish - Newsletter

The school distributes a weekly newsletter called The Dish every Friday throughout the school term. This newsletter is sent to student email accounts, and parents can access it through the XUNO Family App. The Dish includes important announcements, highlights of class activities, showcases of student work, and community information.

Social Media

KSA has a public website, Facebook and Instagram. The website provides general information about the school for new families and potential staff as well as a history timeline.

Facebook and Instagram page provides reminders to parents/carers about important announcements and showcases the KSA community.



COMMUNICATION

XUNO

XUNO acts as an invaluable communication platform for families in KSA. Through the XUNO Family app, parents and guardians have the ability to:

- Complete Inschool and excursion forms
- Inform the school about attendance
- Access up-to-date online attendance information
- View the school's newsletter
- Lesson updates
- Other crucial communications

The XUNO app allows communication to be sent to parents in the app and via email simultaneously.





TECHNOLOGY

Accessing Technology

Technology is an integral part of student's learning in the 21st century. When enrolling at the school, families have an initial conversation with the Digital & Data Team to assess their technology needs and assist with accessing necessary programs.

Families can borrow a laptop kit from the school with the KSA DaD Team providing support and maintenance. Borrowed equipment is supplied with all hardware and learning software required for schooling.

Internet Service

Families arrange their own internet through their chosen provider. A conversation with the DaD Team is recommended to assist with selecting the right service for the family's needs.

Families may be eligible for an internet subsidy whilst enrolled at KSA. Visit the NT governments student financial website for more information.
<https://nt.gov.au/learning/student-financial-help-and-scholarships>

Programs and Systems

As an online distance education institution, KSA employs a wide range of programs and systems to assist students in accessing the resources they need to succeed in their learning journey.

Upon enrolment, families will fill out a digital program information form that outlines the list of programs utilised by the school.



TECHNOLOGY

Microsoft Teams

At KSA, Microsoft Teams is the main program utilised to facilitate educational delivery.

- **Calendar:** We share lesson links via the Calendar, making it convenient for students to join classes and keep track of their daily lessons. Links can be accessed via the Microsoft Teams calendar and also via students email accounts.
- **Teams Assignments:** Students submit their work through Teams Assignments, where teachers can assess and provide feedback—all within the same platform.
- **Learning Material:** All of KSA's learning materials are accessible online in the students' Class Files within Teams, in addition to physical copies being provided.

Microsoft Office 365

All students have access to the Microsoft Office 365 suit of programs for free as part of their enrolment. Students are provided with their username and password upon enrolment. Families are able to access the Office 365 online and can also download the programs if using a BYO device.

Students borrowing a KSA laptop have all programs downloaded and ready to use on the device.

TECHNOLOGY



Mobile Phone Policy

All schools in the NT, including Katherine School of the Air, have a mobile policy to create a focused learning environment.

- Students Preschool to Year 6 cannot possess mobile phones during school hours or contact events.
- Years 7 to 9 students can bring phones but must keep them off and securely stored.
- Primary students must hand in phones at the start of the day and collect them afterward.

Phones will be confiscated if used without an exemption.

Online Lessons Recording

Online lessons, one on ones, tutoring sessions, meetings and online events are recorded at Katherine School of the Air.

Lesson recordings enable students to access previous lessons to embed concepts and review learning.

Recordings are stored as part of the NT Department of Education's Microsoft Teams servers. Access is only via secure student and staff logins.



FACILITIES

Library

Reading is an essential life skill. To promote students' enjoyment and competency in reading, KSA has a well-resourced library. Students can borrow books by making requests through their teacher. When families visit the school, they are also encouraged to spend time browsing the library.

Mailroom and After Hours Lockers

The school has a dedicated mailroom with each family allocated a mailbox. New term work packs are sent out at the end of prior term. Families are also welcome to stop in and pick up or drop off mail during office hours.

Dedicated after hours lockers are also available for families to pick up and drop off. Access to the lockers is arranged by contacting reception or the mailroom.

Families are encouraged to collect mail where possible to reduce mail delays and costs.

Playground & Classroom

KSA has a fully fenced playground and play areas as well as an undercover area that families are welcome to use when visiting the school.

There is also a dedicated classroom/library area for students, home tutors and parents to use whilst in the school.

FINANCIAL ASSISTANCE



Back to School Voucher - BTSV

The Northern Territory Government's Back to School Payment Scheme offers financial support to parents or caregivers with children enrolled in NT schools or registered for home-schooling.

Financial Assistance Details

- You can receive \$200 for educational goods and services for each child.
- The school will provide a list of eligible items available for purchase.
- The payment is exclusively for goods or services obtained from the school.

Eligibility and Conditions:

- If your child is in Preschool to Year 12, you will receive the payment at the first NT Government school your child enrolls in for the school year.
- Please note that unused vouchers cannot be transferred between different schools.
- For dual-enrolled students, the Back to School Voucher is assigned to their home school, not to Katherine School of the Air.

Please contact KSA reception if you have any questions.

FINANCIAL ASSISTANCE



NT Sports Vouchers

Katherine School of the Air receives a grant for all students enrolled at KSA to facilitate Sports Week and Swim Week activities. The funds are used to enable the school to provide sporting and swimming coaches and sporting activities during the inschools.

Financial Assistance & Allowances

Families might qualify for various financial assistance and allowance programs provided by both the Commonwealth and Northern Territory Governments. It is highly recommended that families explore the following websites to determine their eligibility, as factors such as circumstances, location, and enrollment type can influence this:

- For Commonwealth Assistance:

Visit Service Australia at www.servicesaustralia.gov.au/assistance-for-isolated-children-scheme

- For Northern Territory Assistance:

Visit Student Financial Help at <https://nt.gov.au/learning/student-financial-help-and-scholarships>